



**PERFORMANCE™  
BUILDING  
SOLUTIONS**



# KRATOS™ MX7

## Next-Generation Insulated Structural Exterior Sheathing

KRATOS™ MX7 is a dual-layer structural exterior sheathing combining a mineral magnesium oxide (MgO) board with integrated EPS insulation.

MX7 delivers structural capacity, fire protection, thermal performance, and moisture control in a single product, eliminating the complexity, cost, and labor associated with traditional wall assemblies.



## Learn how the Kratos MX7 board works

### Interior Layer: EPS Thermal Core

- Continuous insulation creates a true thermal break
- Reduces thermal bridging through steel, concrete, or wood framing
- Acts as an air and moisture barrier
- Adjustable R-values to meet climate requirements
- Treated to protect against termites and other pests

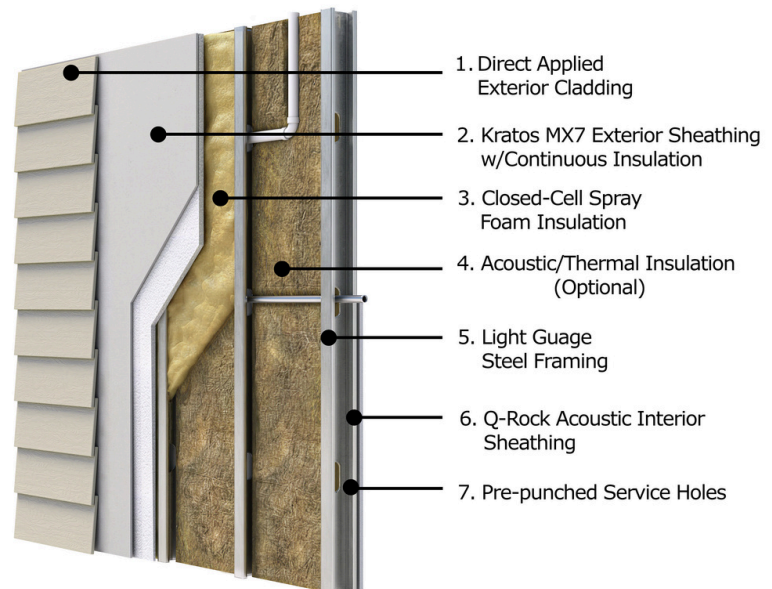
### Exterior Layer: MgO Structural Board

- Non-combustible, inorganic mineral composition
- Provides impact resistance, structural shear, racking resistance, and fastener pull-through and pull-out
- Fire-rated performance suitable for 1- and 2-hour assemblies
- Moisture-resistant, mold-resistant, rot-resistant

### MX7 consolidates:

- Structural sheathing
- Fire protection
- Continuous insulation
- Air & water barriers

**Fewer layers  
Fewer trades  
Fewer failure points**

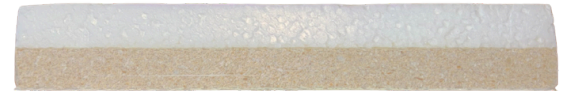


# See Our Key Performance Advantages

Enhanced Durability	Fire Resistance	Environmental Sustainability
<ul style="list-style-type: none"> <li>100% inorganic</li> <li>No rot, mold, mildew, or insects</li> <li>Abuse/Impact-resistant</li> </ul>	<ul style="list-style-type: none"> <li>Non-combustible mineral sheathing</li> <li>Superior fire performance vs wood-based panels</li> </ul>	<ul style="list-style-type: none"> <li>Low-carbon MgO mineral panel</li> <li>Reduced material waste</li> <li>Reduced material usage, fewer materials</li> </ul>
Enhanced structural capacity	Economic Efficiency	Energy Conservation
<ul style="list-style-type: none"> <li>Shear + diaphragm performance</li> <li>High impact resistance</li> <li>Long-term dimensional stability</li> </ul>	<ul style="list-style-type: none"> <li>Faster installation</li> <li>Lower total cost of ownership (TCO)</li> </ul>	<ul style="list-style-type: none"> <li>Integrated thermal break</li> <li>Improved envelope efficiency</li> </ul>

## Look How Kratos MX7 Compares To Wood!

Feature	Wood	MX7
Fire Rating	✗	✓
Moisture Resistance	✗	✓
Thermal Break	✗	✓
Termite/Insect Resistant	✗	✓
Dimensionally Stable	✗	✓
Built-in WRB	✗	✓



\*Picture of a sample of actual MX7 Panel  
Patent Pending | Made in USA

Category	Traditional Wood Sheathing (OSB / Plywood / Zip)	KRATOS™ MX7
Combustibility	Highly combustible	Non-combustible mineral sheathing
Fire Rating	No inherent fire rating	Suitable for 1- and 2-hour fire-rated assemblies
Moisture Resistance	Absorbs water, swells, delaminates	Moisture-proof, inorganic, no swelling
Mold / Mildew	Supports mold and fungus	Fully inorganic — mold-resistant
Termites / Insects	Vulnerable	Insect and termite resistant
Durability	Degrades over time	Long-term stability, no rot
Impact Resistance	Low to moderate	High-impact exterior-grade surface
Air & Water Barrier	Requires additional wraps	Integrated impermeability — no need for extra building wrap
Thermal Bridging	No thermal break	Integrated Continuous Insulation layer (Thermal Break)
Energy Efficiency	Low	Enhanced envelope performance
Thermal Conductivity	K-value: ~0.80 Btu-in/hr-ft <sup>2</sup> ·°F	K-value: 0.43 Btu-in/hr-ft <sup>2</sup> ·°F
Resistance To Heat Flow	R-value/Inch @ ~1.25	R-value/Inch @ ~4 to 5
Structural Capacity	High	High
Environmental Profile	High carbon footprint (wood, adhesives, resins)	Low-carbon footprint - Magnesium mineral panel
Longevity	Limited, dependent on maintenance	Long service life — inorganic materials
Installation	Multiple layers required	Single high-performance panel replaces multiple layers
Cost Over Time	Higher maintenance + replacements	Lower TCO (Total Cost of Ownership)

## Make The Switch To MX7 Today!

561-935-3700

120 Jupiter Key Rd, #1, Jupiter, FL 33477

performancebuildingsol.com

